

Figure 2.1: Metropolitan Status

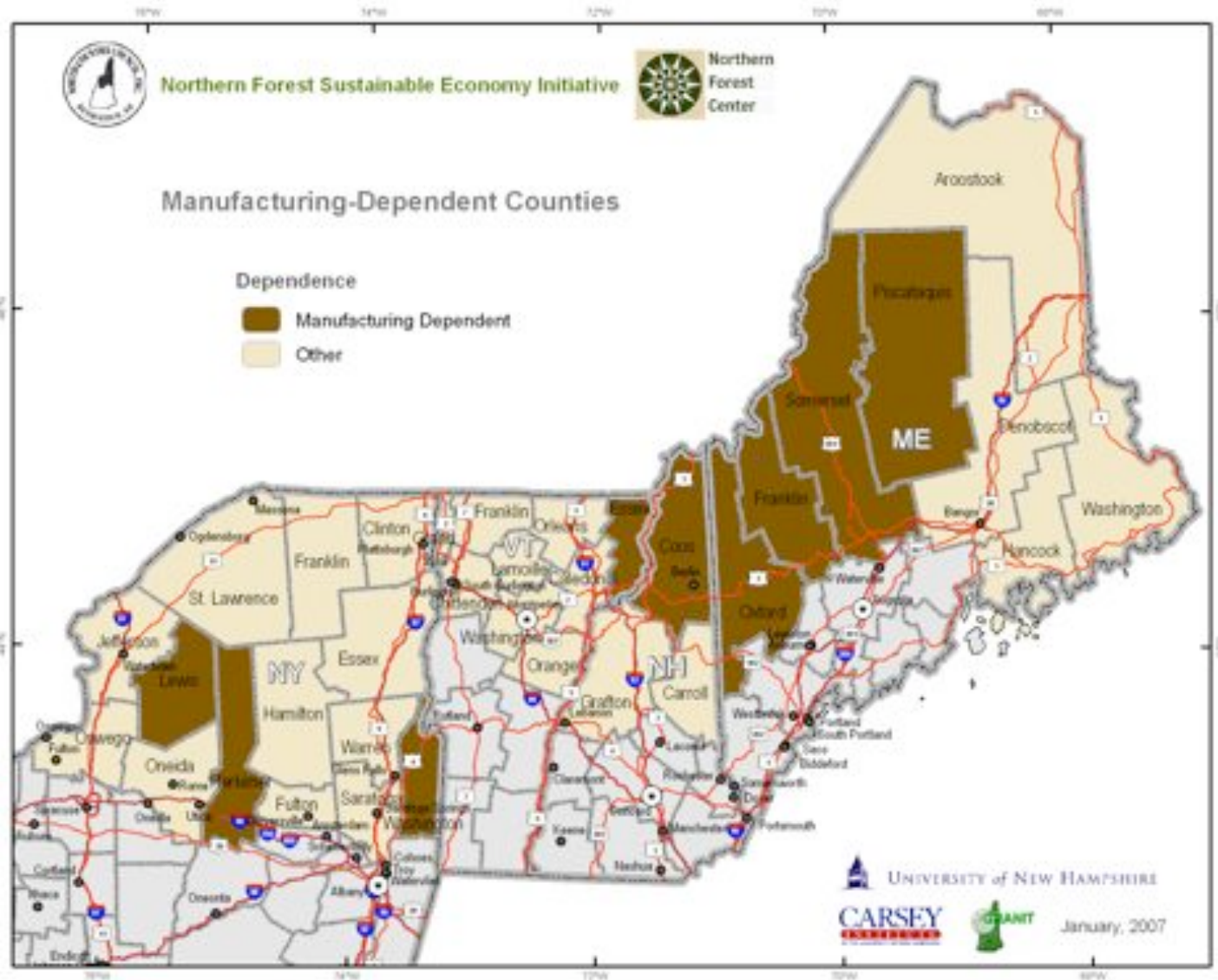


Figure 2.2: Manufacturing-Dependent Counties

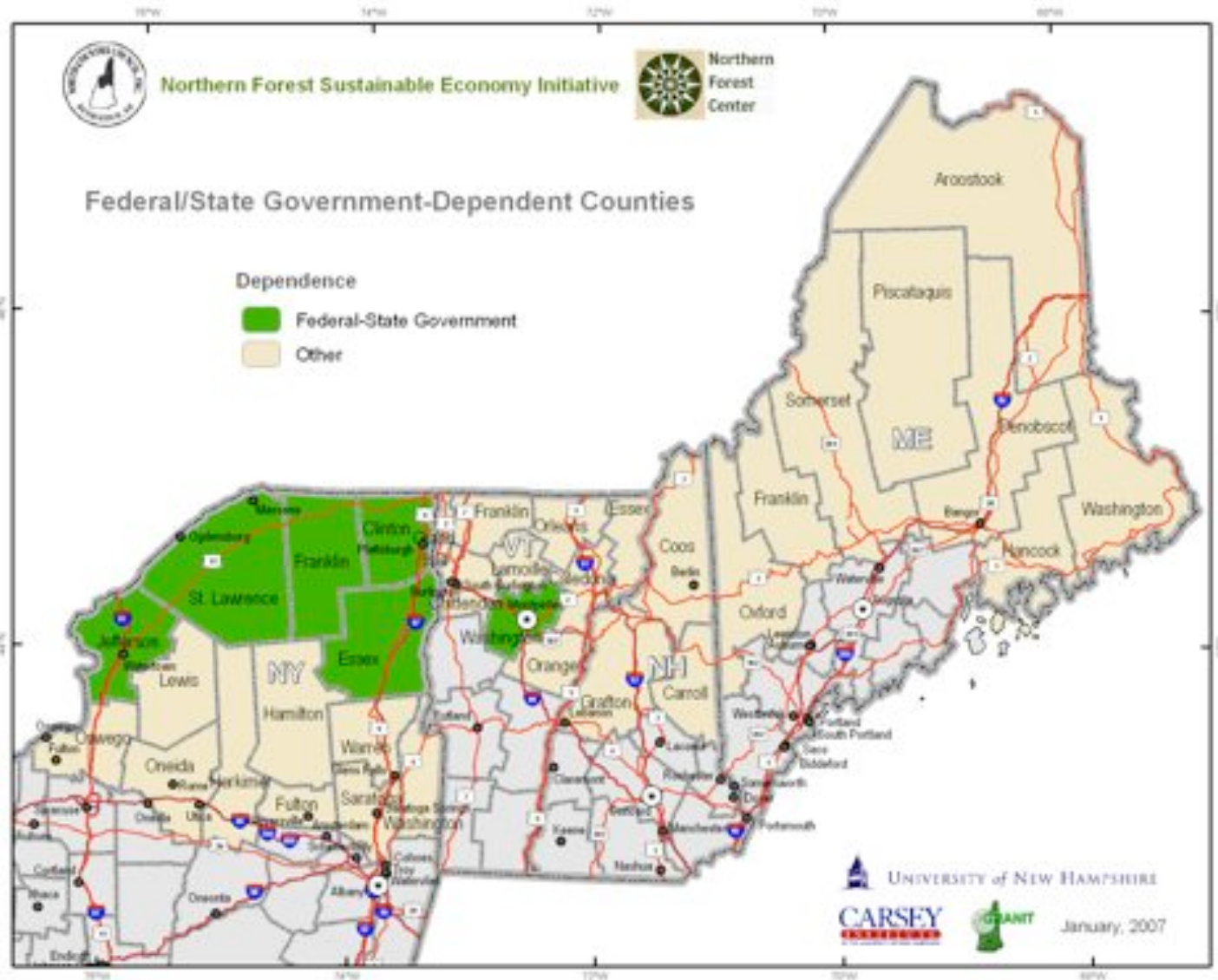


Figure 2.3: Federal/State Government-Dependent Counties

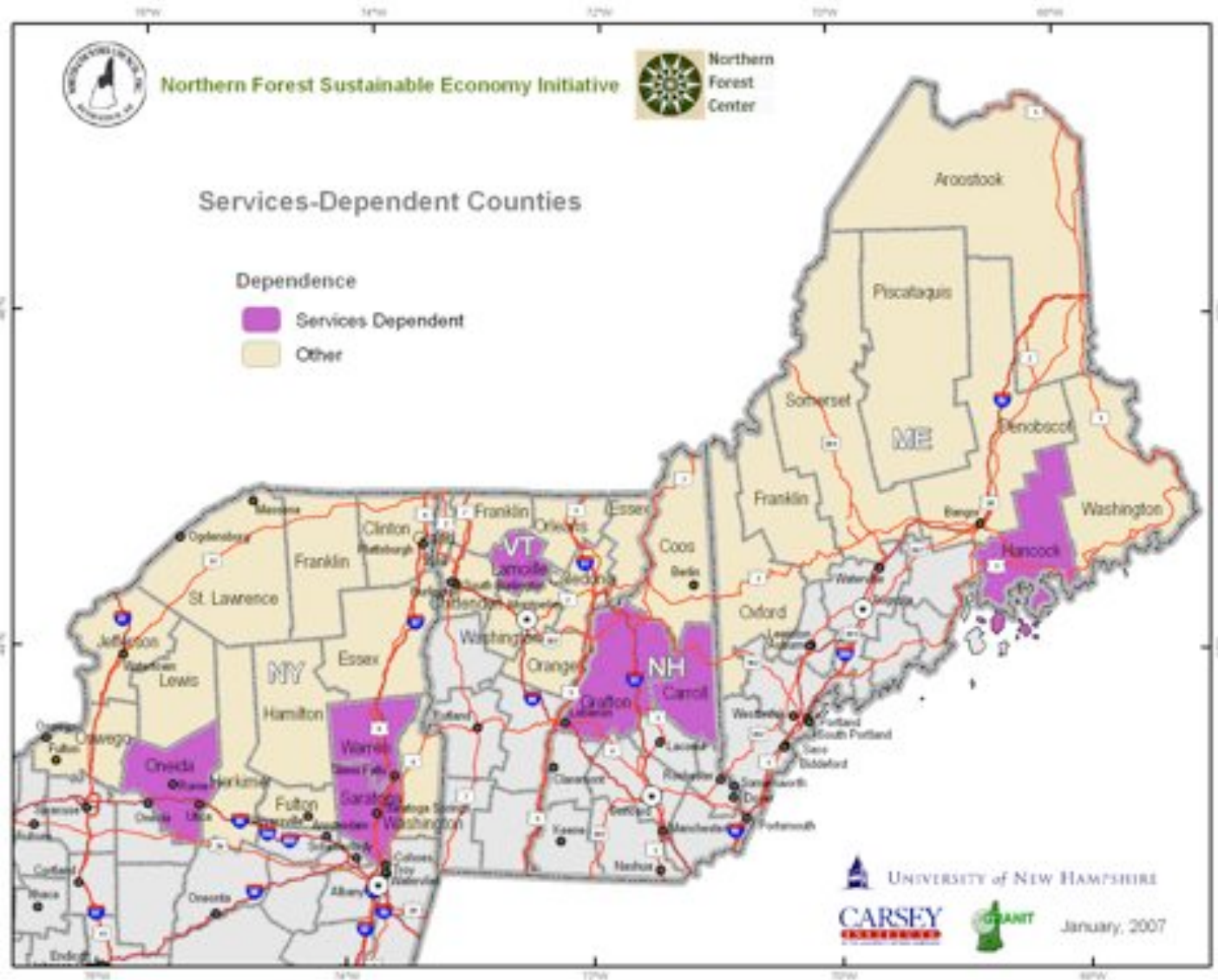


Figure 2.4: Services-Dependent Counties

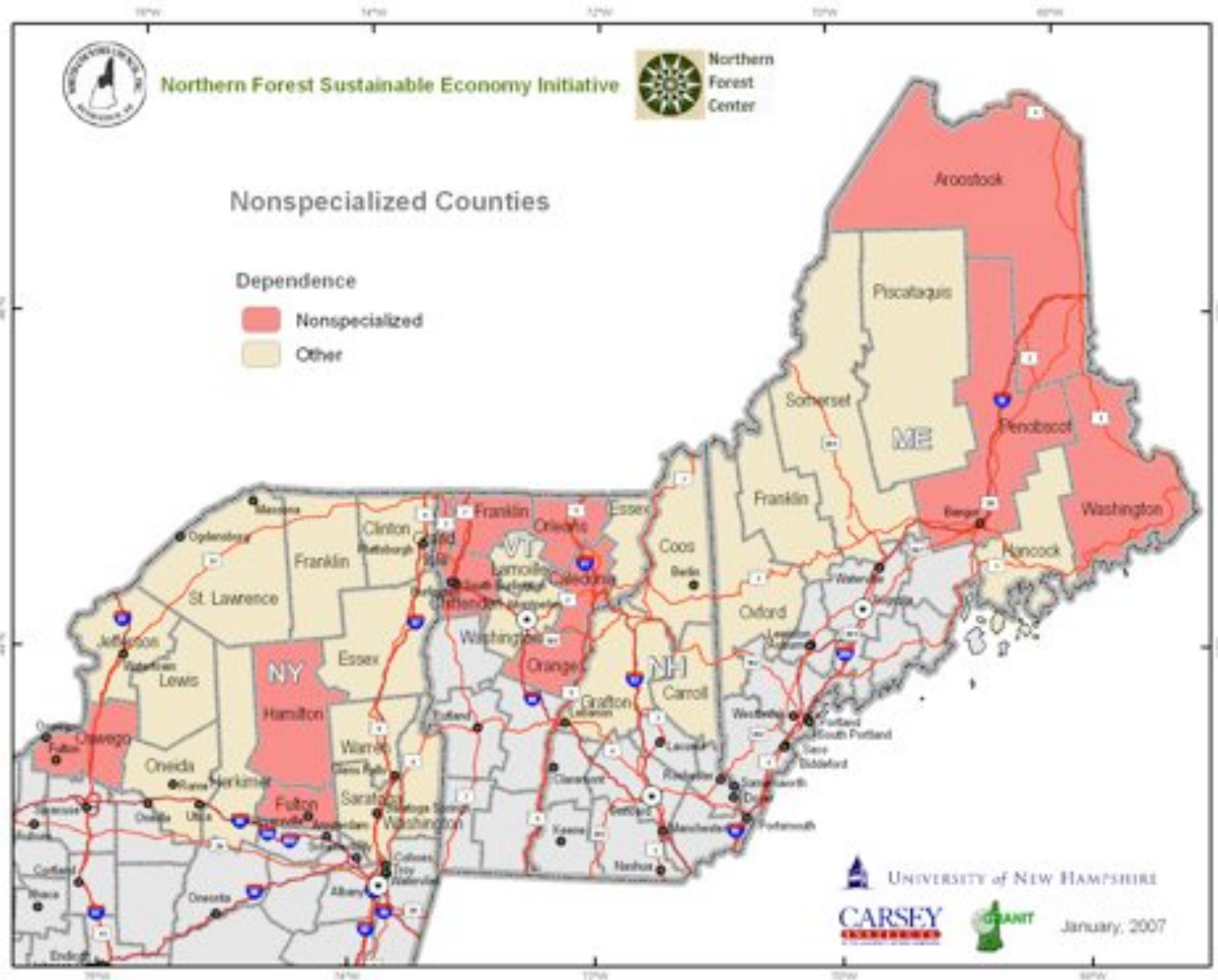


Figure 2.5: Nonspecialized Counties

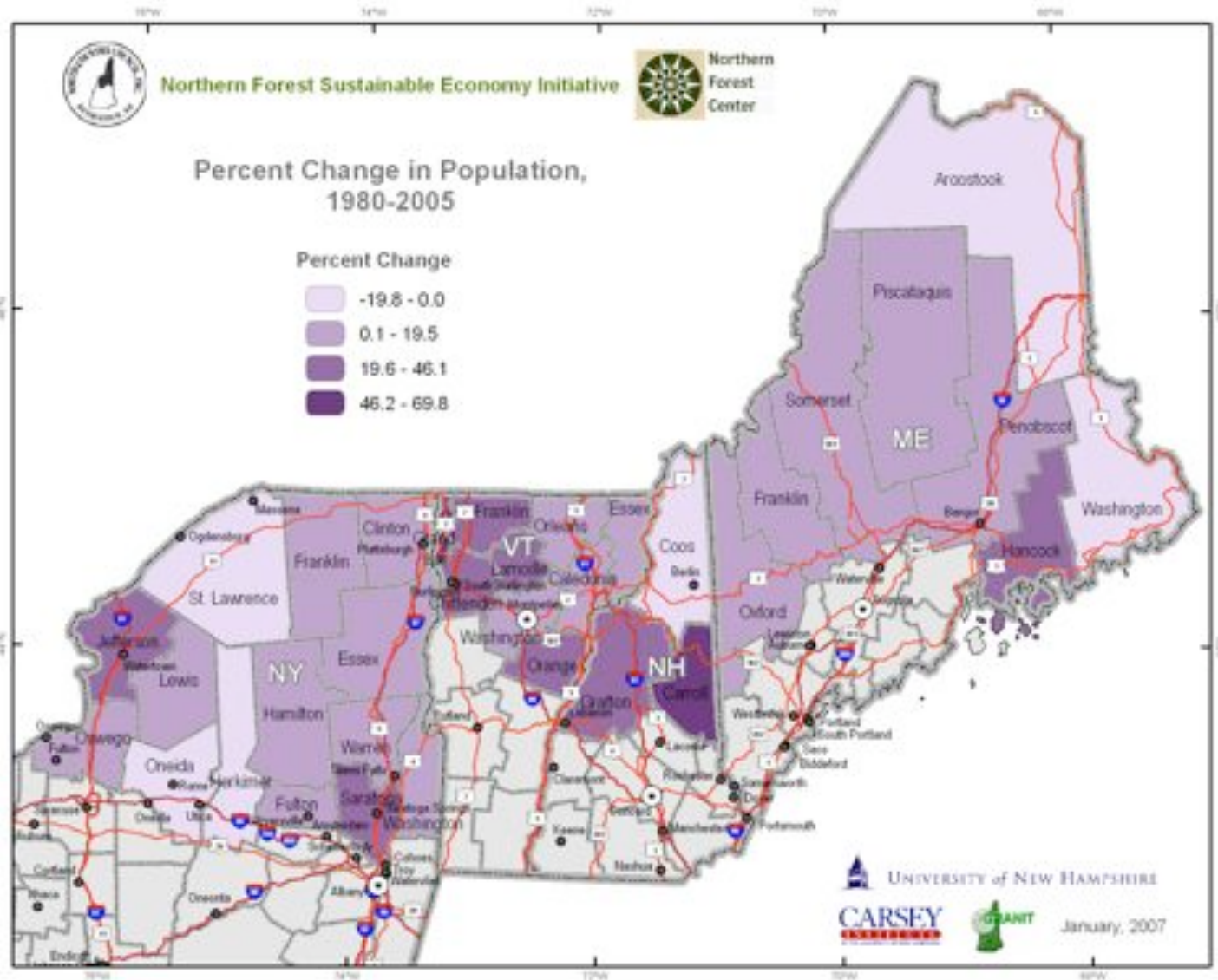


Figure 2.10: Population Change 1980–2005

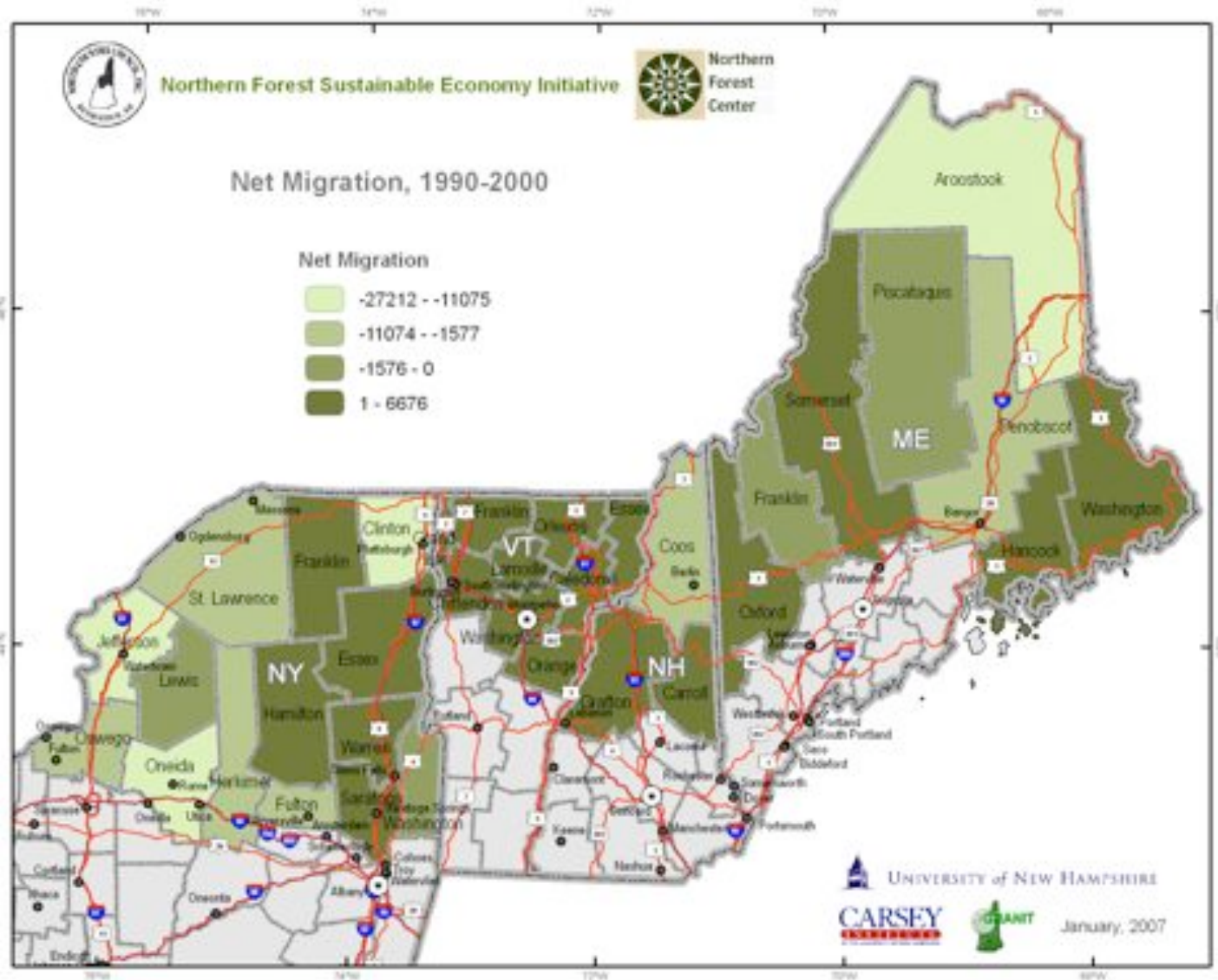


Figure 2.11: Net Migration 1990–2000

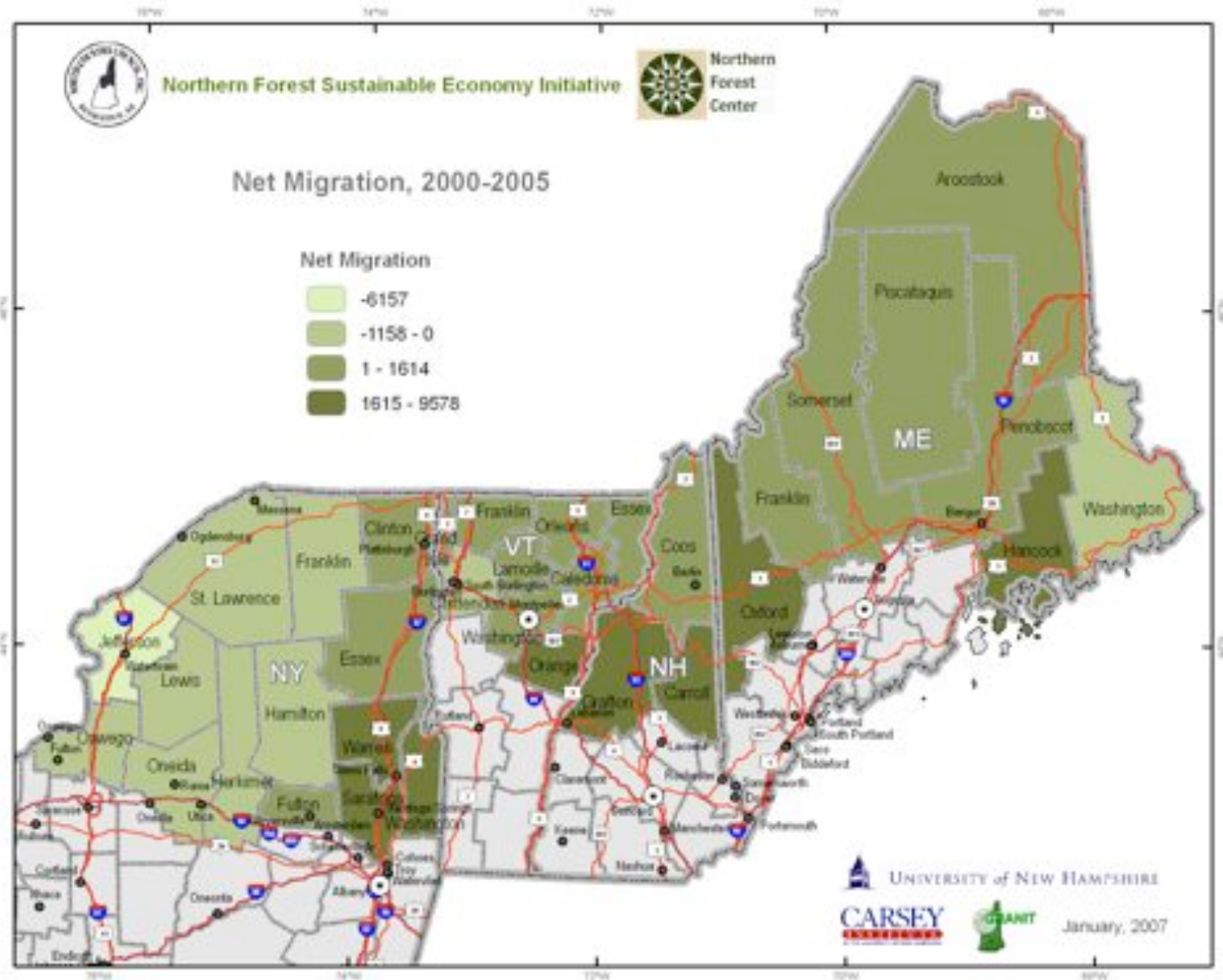


Figure 2.12: Net Migration 2000–2005

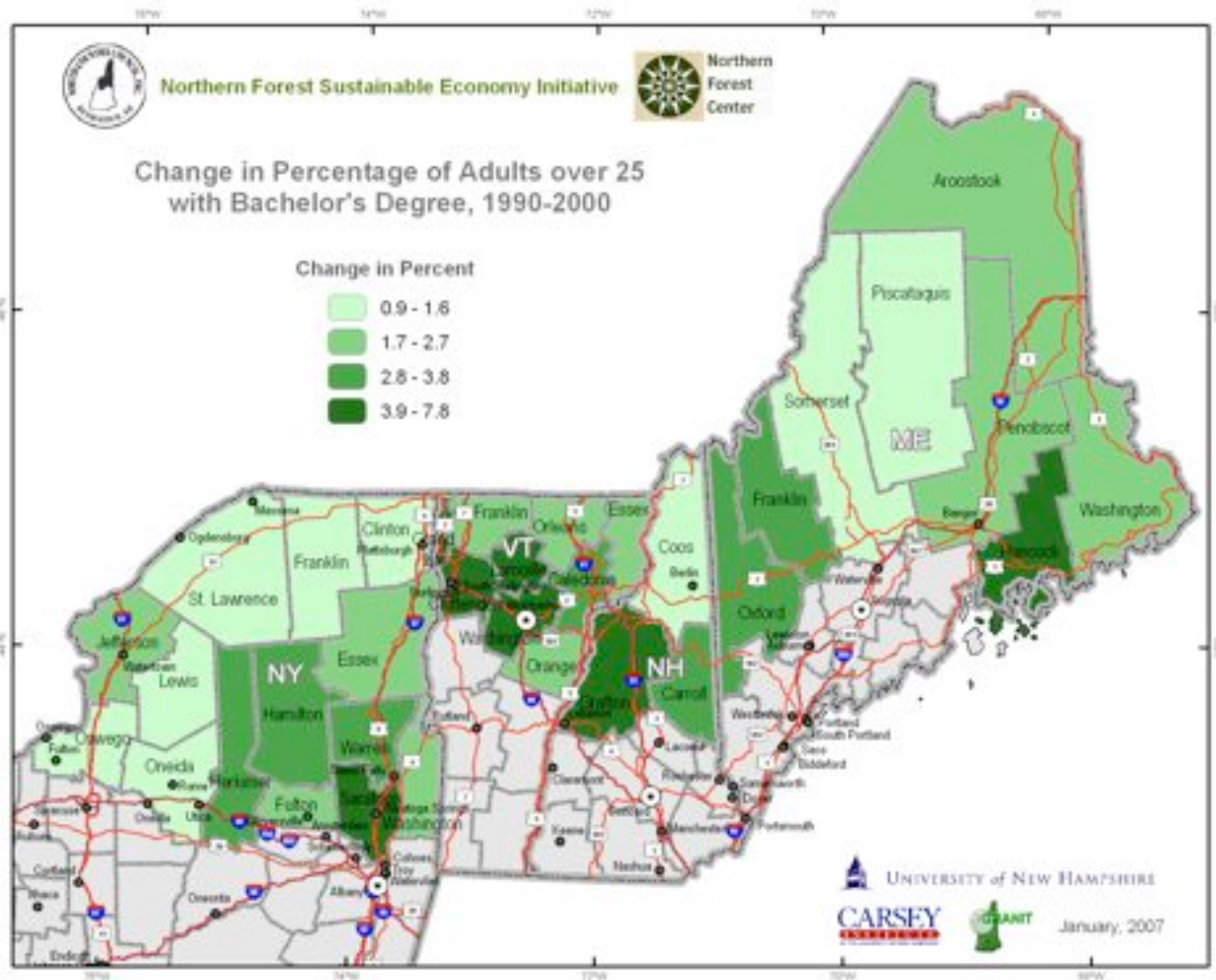


Figure 2.19: Change in Percent of Adults over 25 with a Bachelor's Degree or Higher 1990–2000

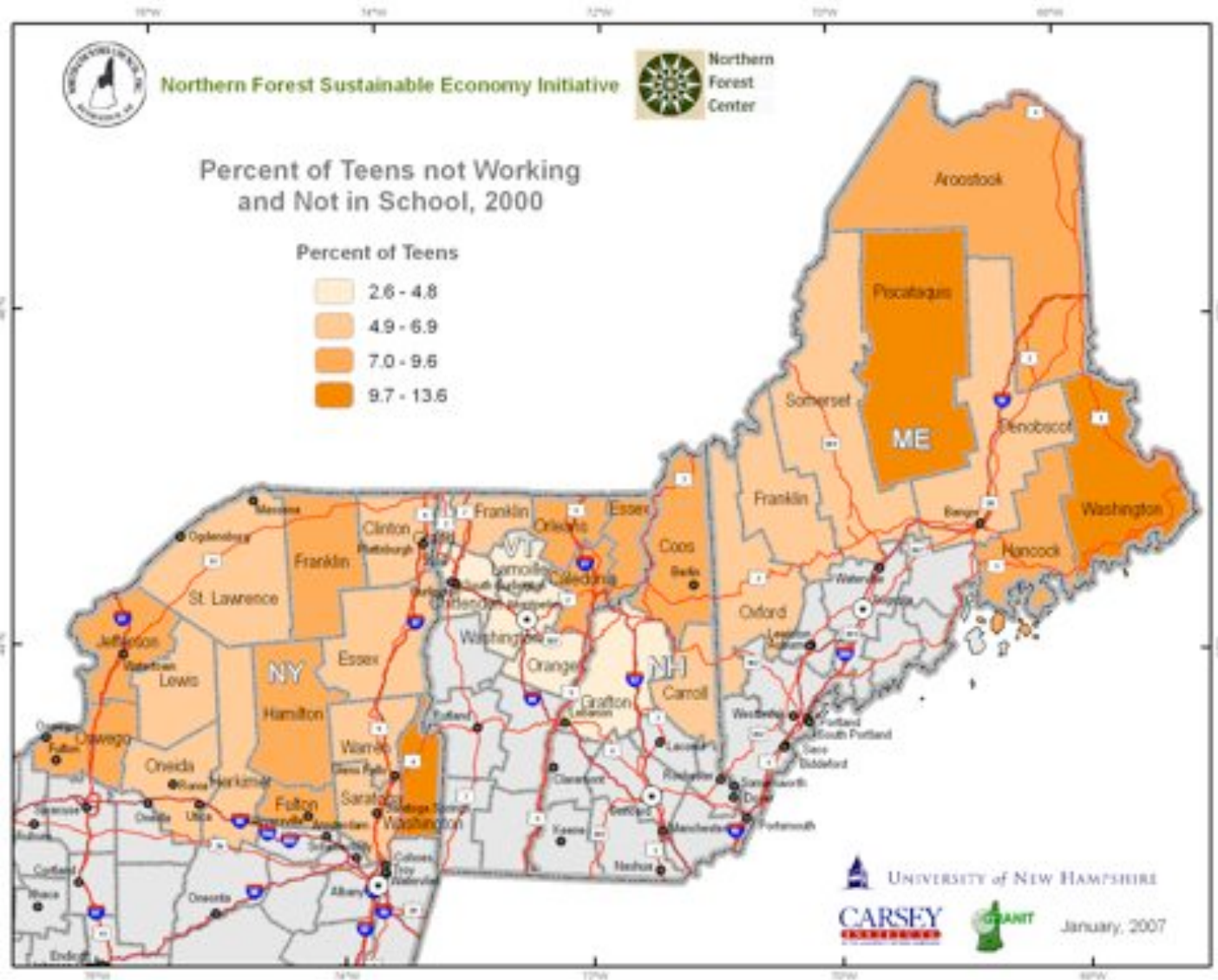


Figure 2.20: Percent Age 15–17 not Working and not in School 2000

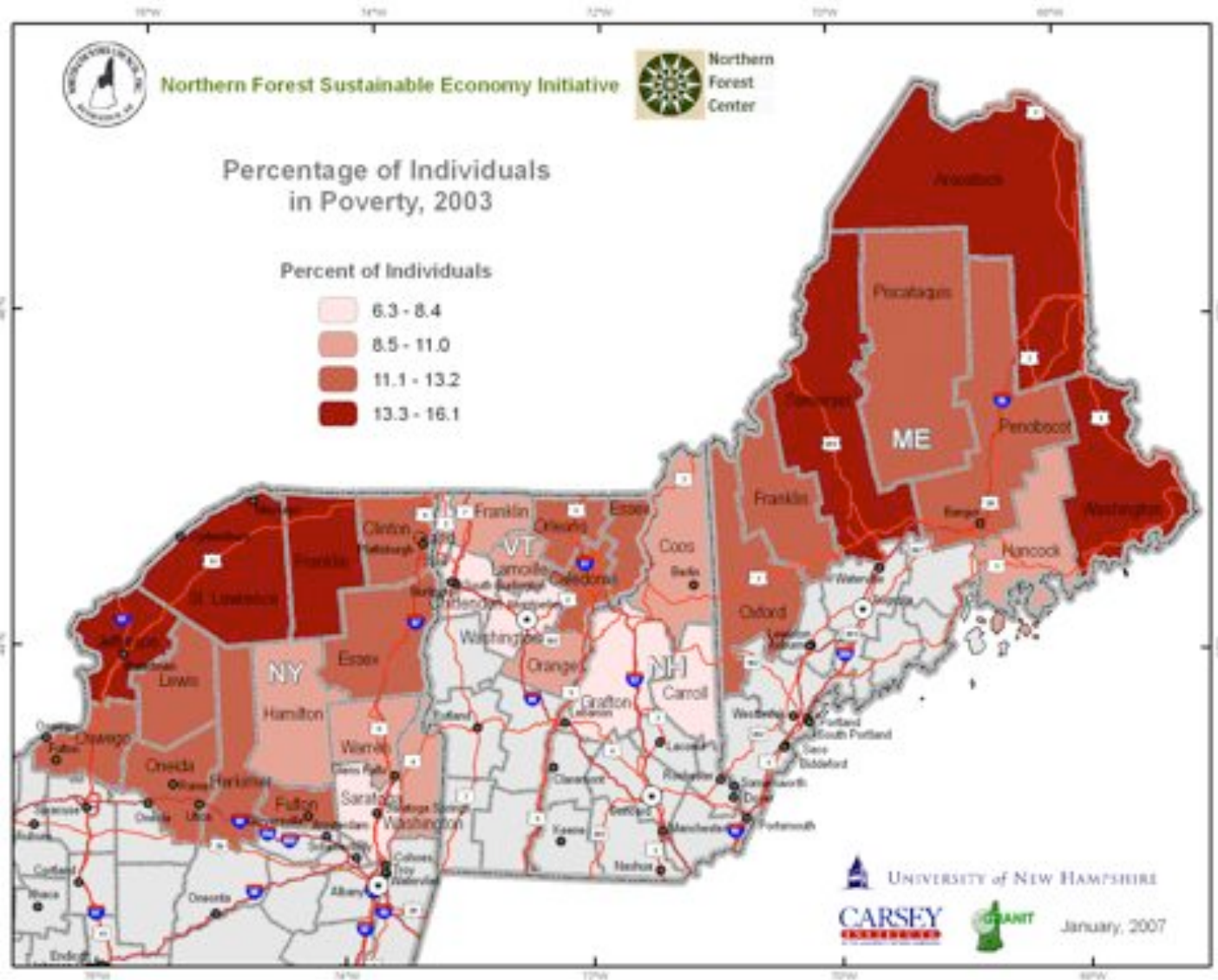


Figure 2.24: Percent of Individuals in Poverty 2003

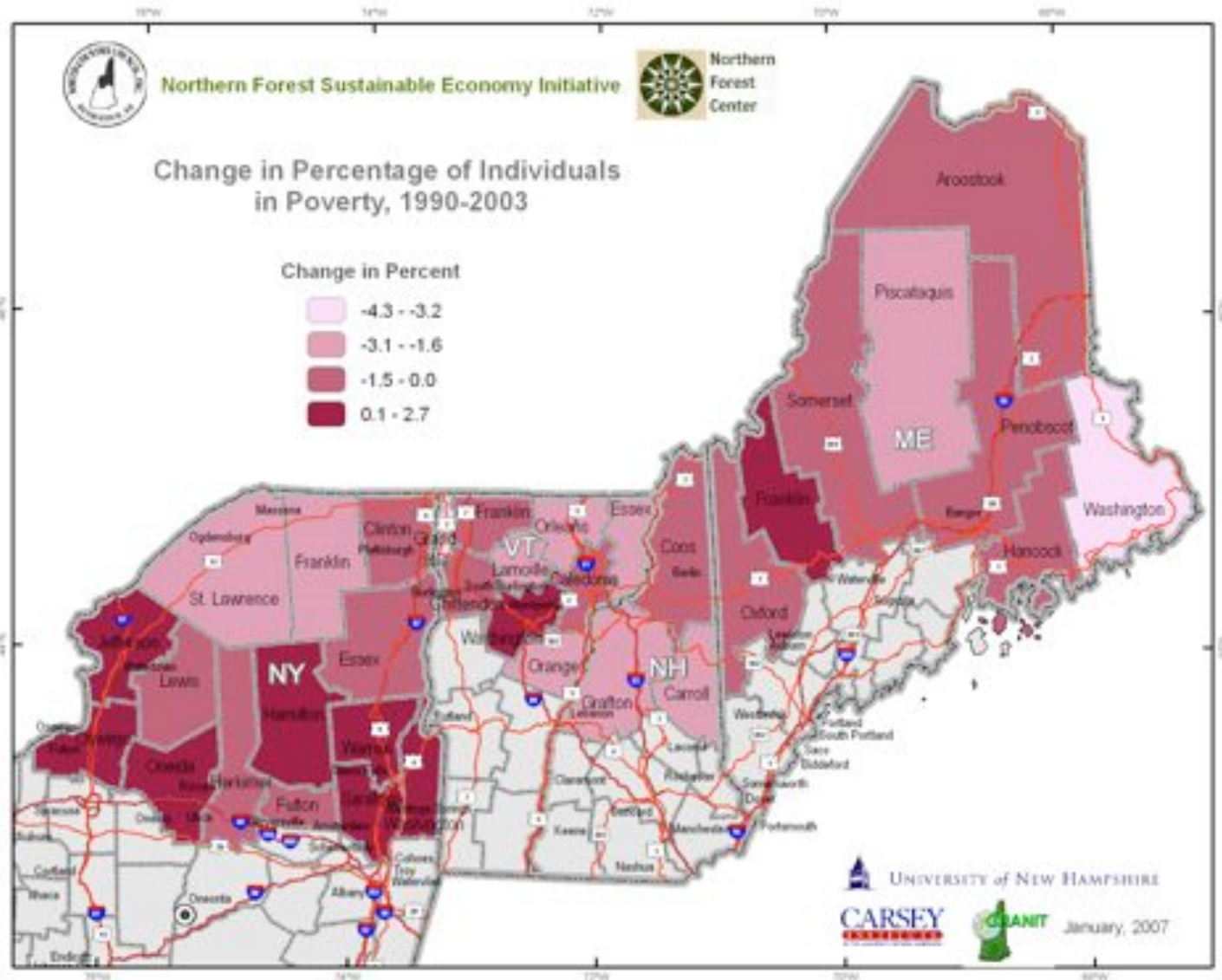


Figure 2.25: Change in Percent of Individuals in Poverty 1990–2003

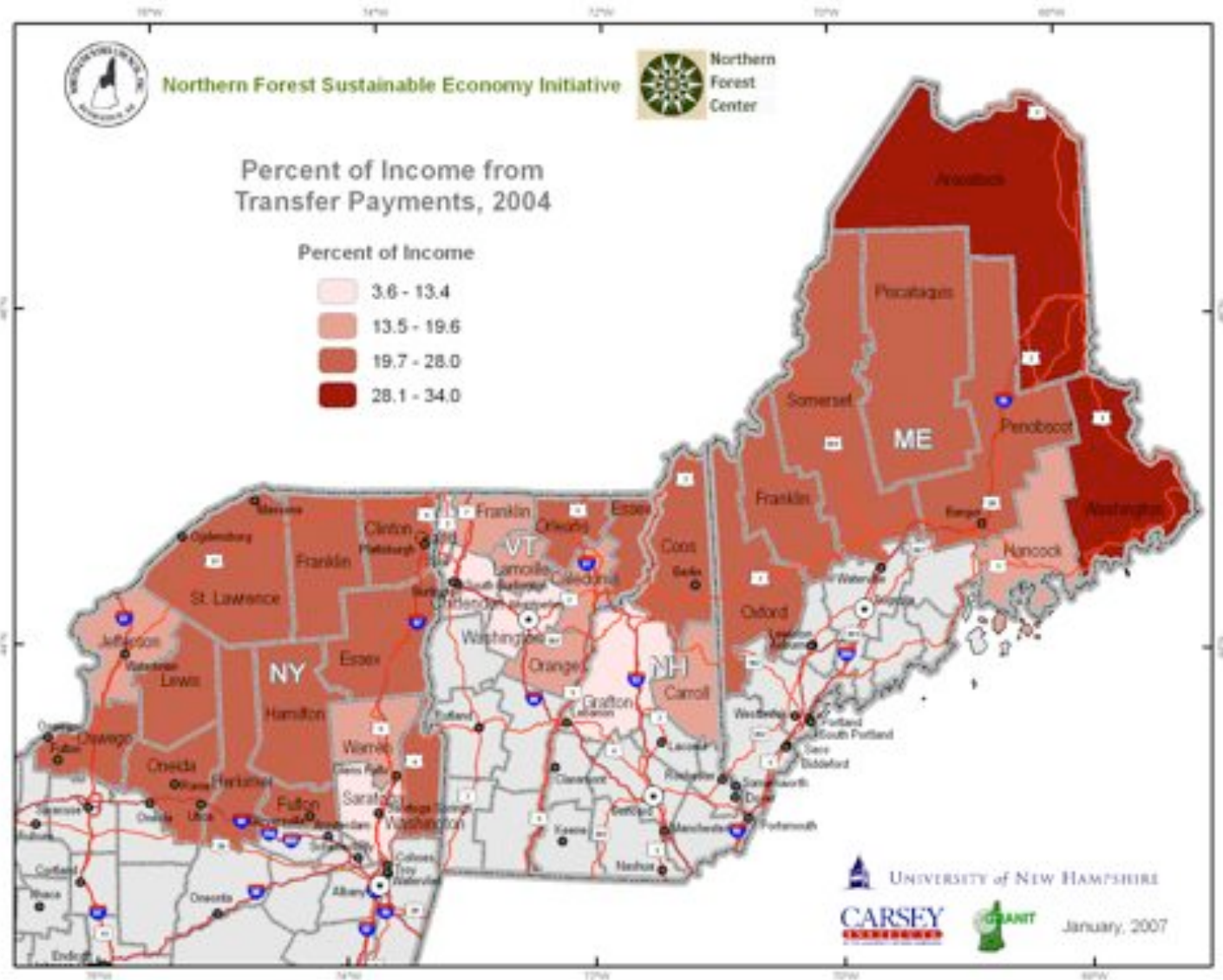


Figure 2.26: Percent of Personal Income from Transfer Payments 2004

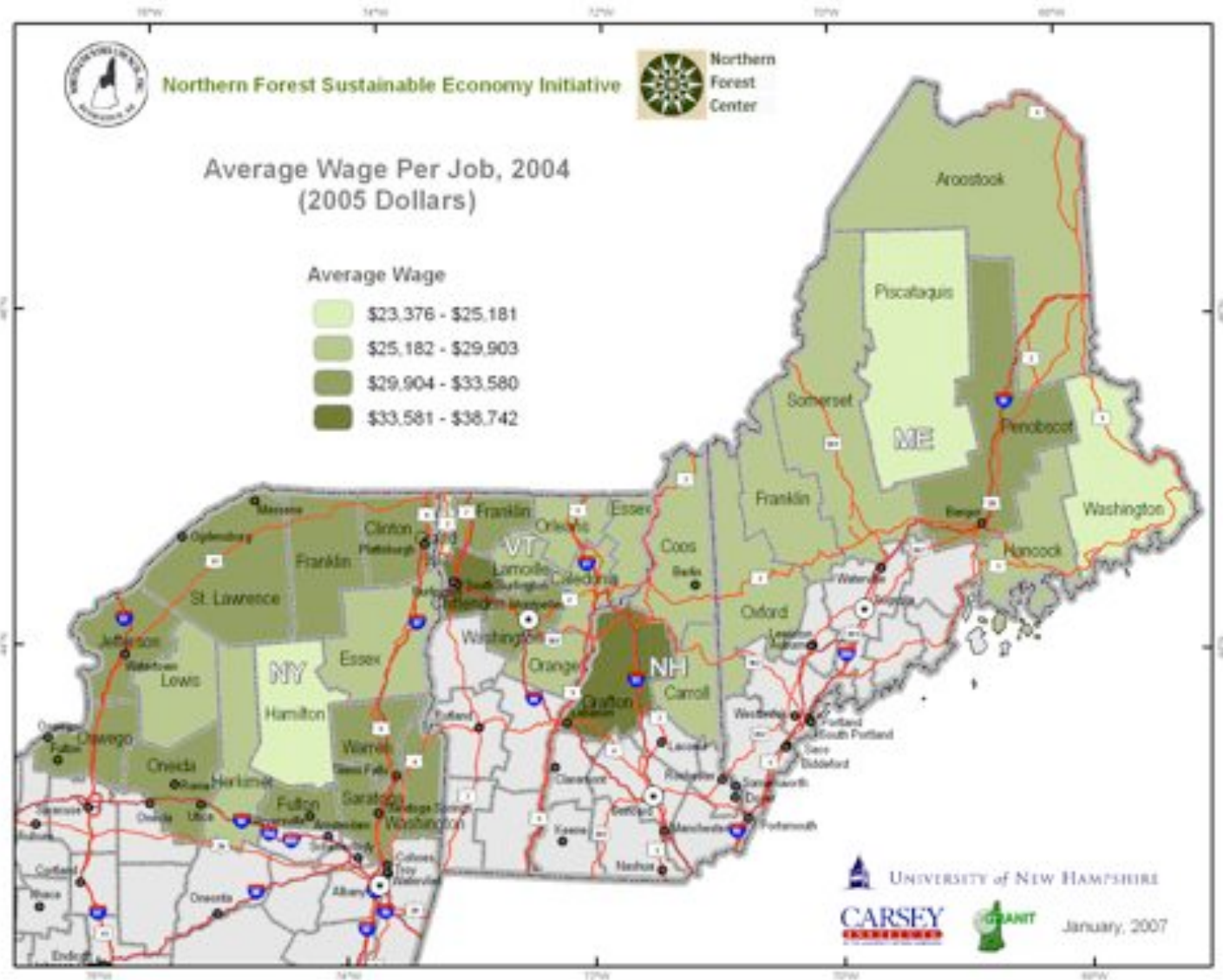


Figure 2.28: Average Wage per Job 2004

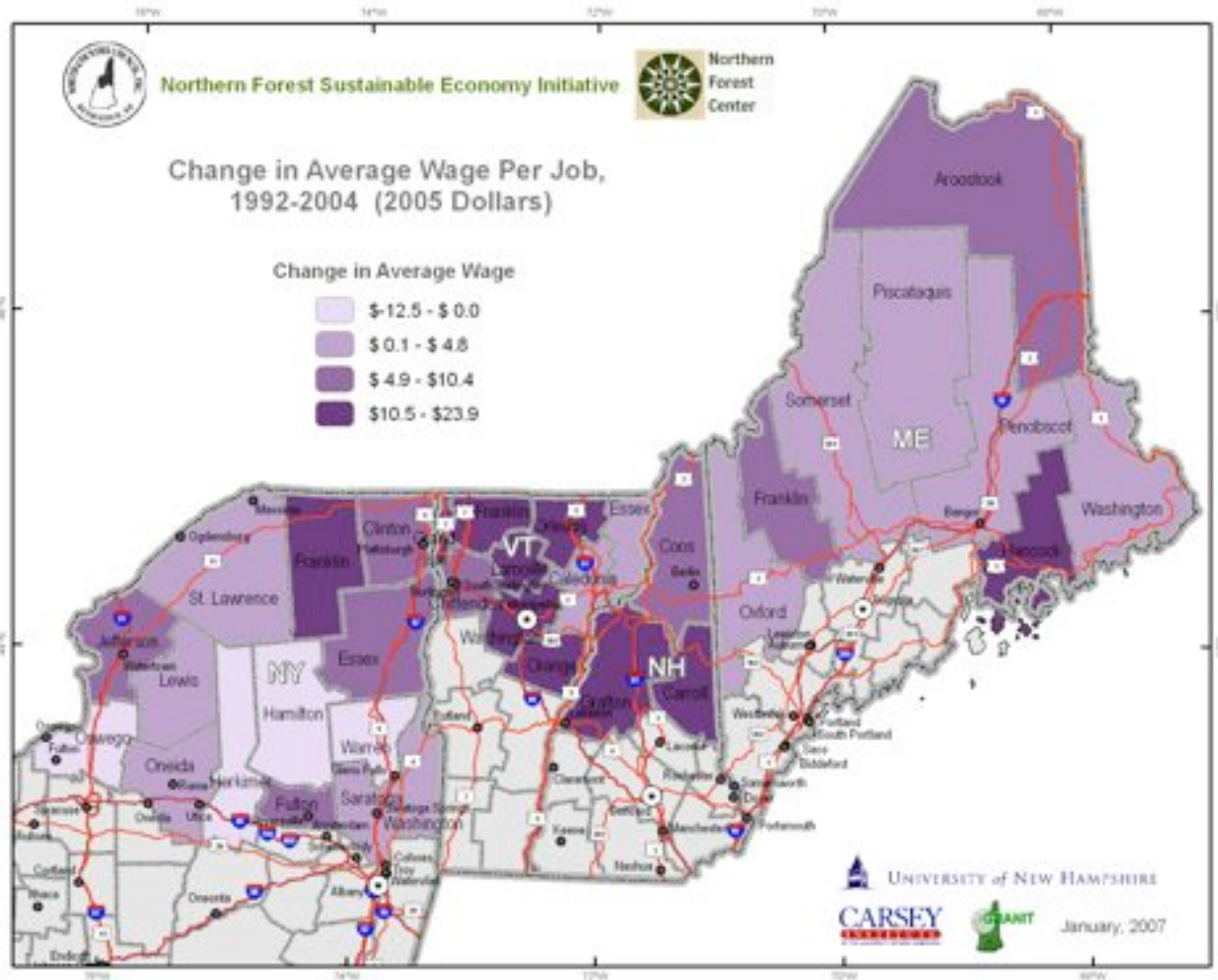


Figure 2.29: Percent Change in Average Wage per Job 1992–2004

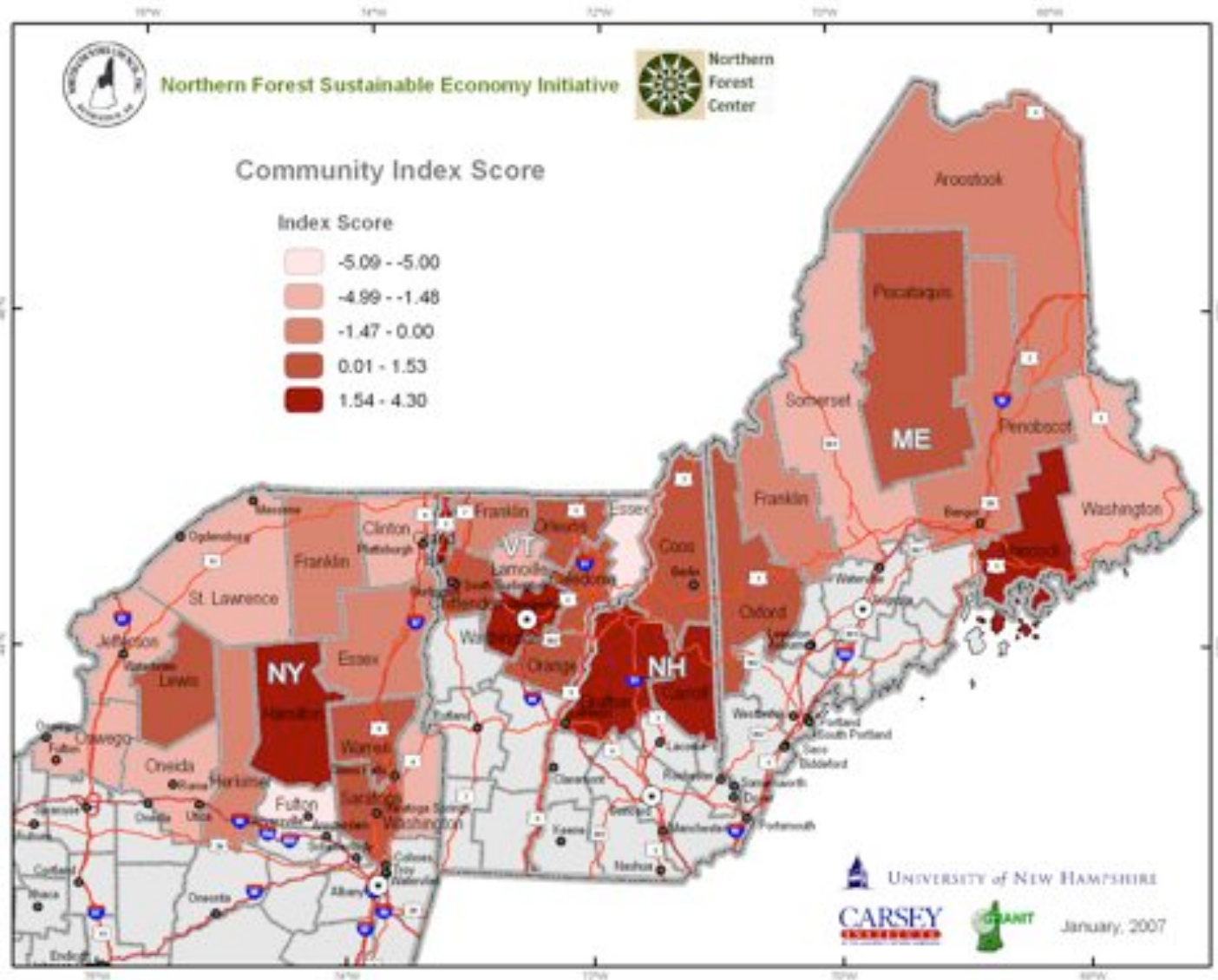


Figure 2.34: Community Index Score

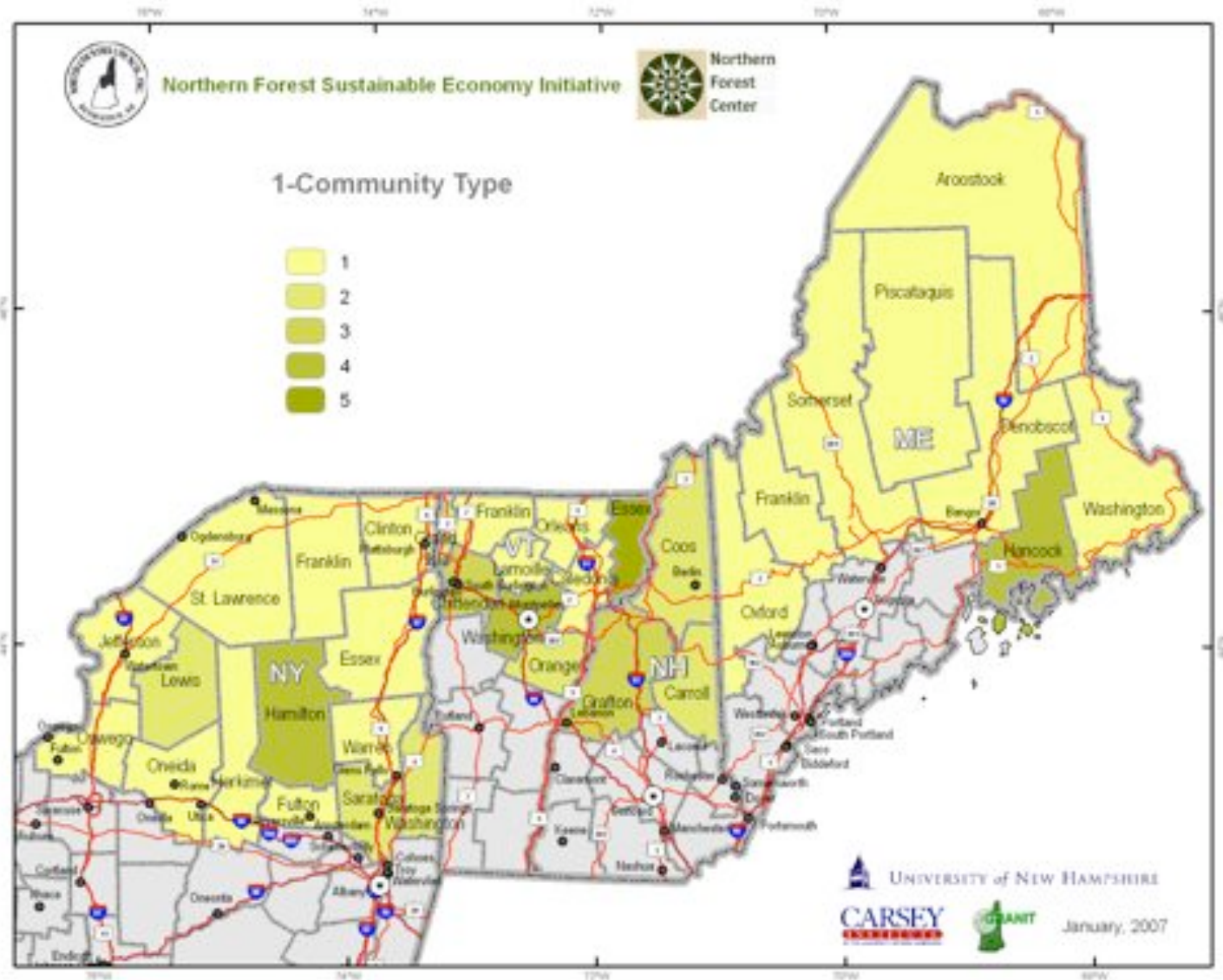


Figure 2.35: Community Index Type

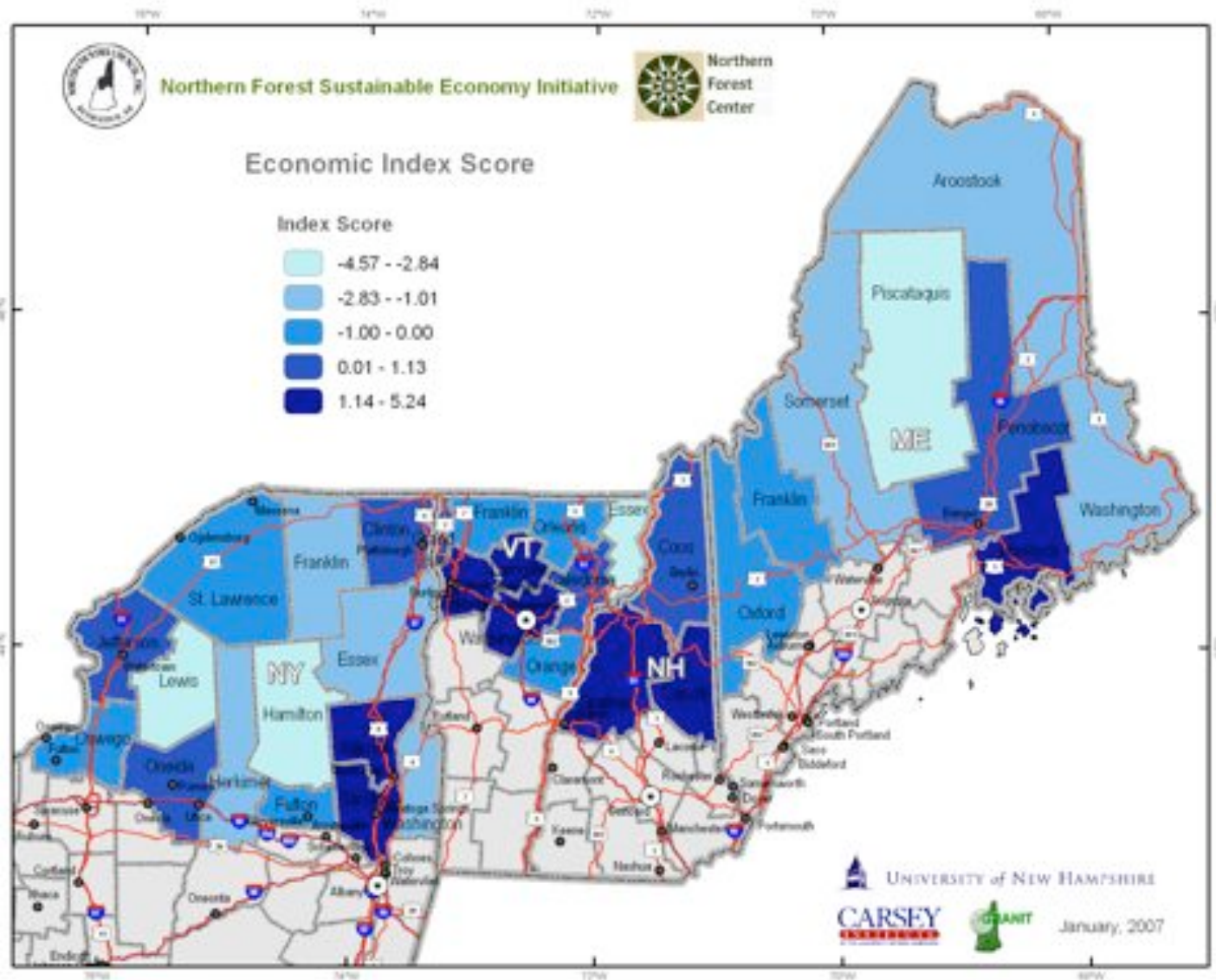


Figure 2.36: Economic Index Score

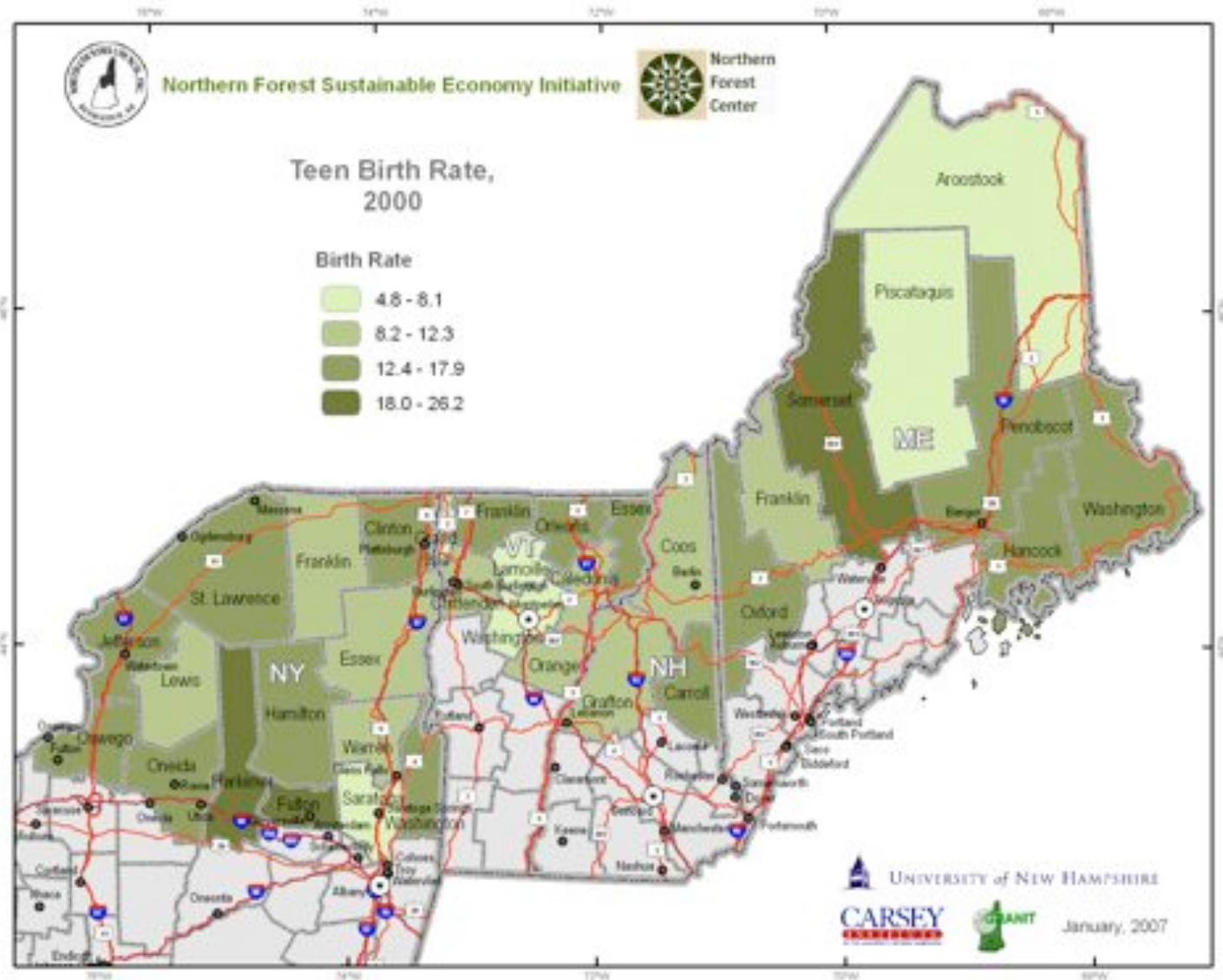


Figure 2.41: Teen Birth Rate 2000