



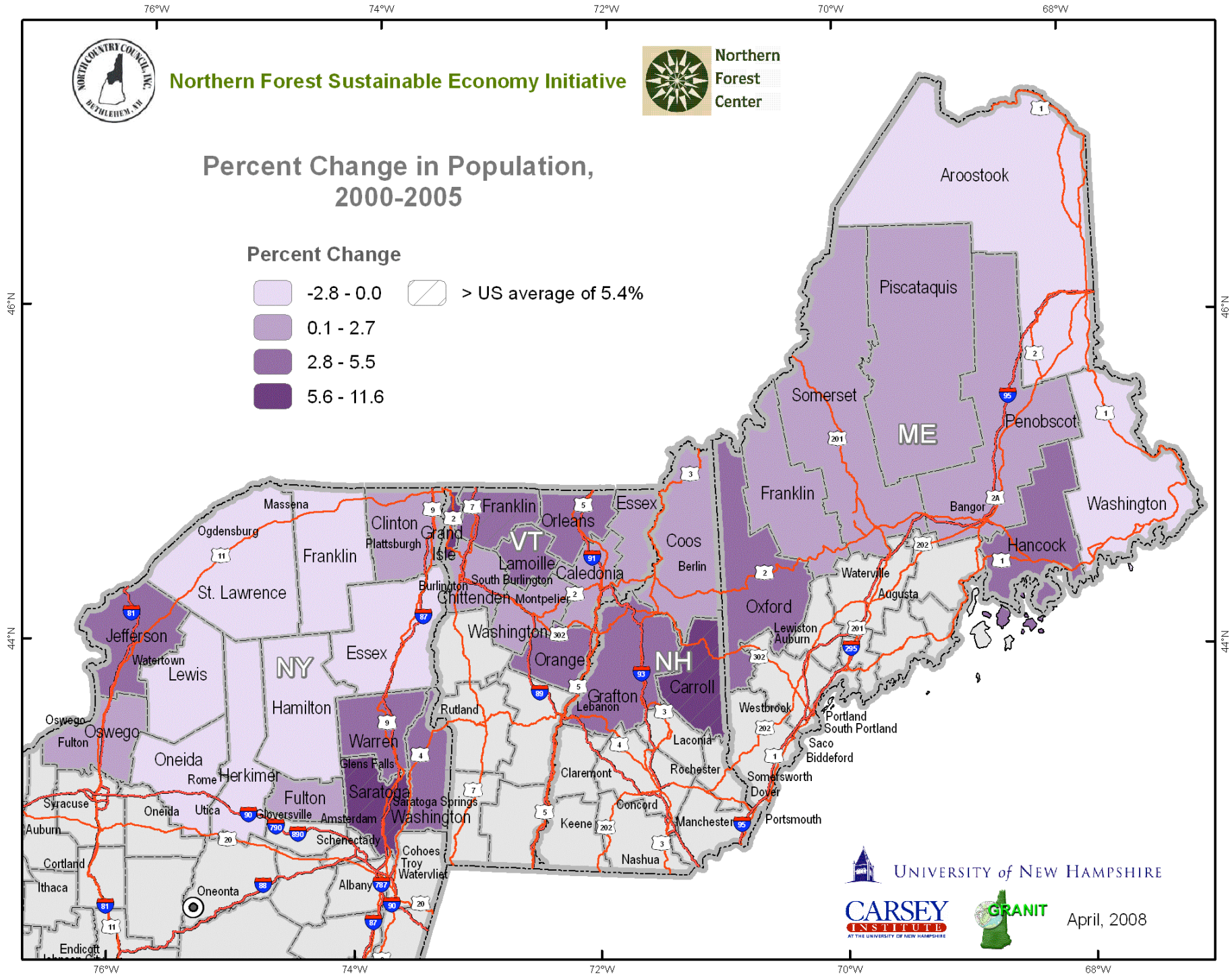
Northern Forest Sustainable Economy Initiative



Percent Change in Population, 2000-2005

Percent Change

- 2.8 - 0.0
- 0.1 - 2.7
- 2.8 - 5.5
- 5.6 - 11.6
- > US average of 5.4%



UNIVERSITY of NEW HAMPSHIRE



April, 2008